



Road Management Services

Working on behalf of



0300 123 5000

[www.nationalhighways.co.uk](http://www.nationalhighways.co.uk)

24<sup>th</sup> April 2025

### **Cyclic Maintenance on A419/A417**

We are planning essential maintenance at A419/A417. These works will affect various sections of the A419/A417 as noted below, the remaining sections of the A419/A417 outside of the works area shall operate as usual.

### **What work is being carried out?**

Cyclic maintenance includes a series of planned routine activities required to be undertaken on the network to maintain the safety, functionality and appearance of the A419/A417 network. These works typically include grass cutting, gully cleaning and vegetation management.

### **What are the benefits to road users?**

Our work reduces interventions, so the road remains open thus reducing delays and improving journey time reliability. Also, it will provide a safer and smoother journey for road users.

### **When and where will the work be carried out? (Traffic restrictions – check before you travel)**

There will be **night closures from 20:00 hours until 06:00 hours the following morning** on the following dates:

- A419 Closure between Lady Lane Junction and A420 White Hart Roundabout Junction (Diversion Route 12 SB) - **Thursday 1<sup>st</sup> May & Friday 2<sup>nd</sup> May**
- A419 Closure between A420 White Hart Roundabout Junction and Turnpike Junction (Diversion Route 12 NB) - **Tuesday 6<sup>th</sup> May & Wednesday 7<sup>th</sup> May**
- A419 Closure between A420 White Hart Roundabout Junction and Commonhead Junction (Diversion Route 11 SB) - **Thursday 8<sup>th</sup> May & Friday 9<sup>th</sup> May**
- A419 Closure between Commonhead Junction and A420 White Hart Roundabout

Junction (Diversion Route 11 NB) - **Monday 12<sup>th</sup> May & Tuesday 13<sup>th</sup> May**

- A419 Closure between M4 Junction 15 and Commonhead Junction (Diversion Route 10 NB & SB) - **Wednesday 14<sup>th</sup> May & Thursday 15<sup>th</sup> May**
- A419 Closure between Turnpike Junction and Spine Road Junction (Diversion Route 14 NB) - **Friday 16<sup>th</sup> May & Monday 19<sup>th</sup> May**
- A419 Closure between Cricklade Junction and Spine Road Junction (Diversion Route 7 NB) - **Tuesday 20<sup>th</sup> May & Wednesday 21<sup>st</sup> May**
- A419 Closure between Spine Road Junction and Burford Road Interchange (Diversion Route 6 NB) - **Thursday 22<sup>nd</sup> May & Friday 23<sup>rd</sup> May**
- A419 Closure between Spine Road Junction and Cricklade Junction (Diversion Route 7 SB) - **Tuesday 27<sup>th</sup> May & Wednesday 28<sup>th</sup> May**
- A419 Closure between A419 Closure between Spine Road Junction and Lady Lane Junction (Diversion Route 14 SB) - **Thursday 29<sup>th</sup> May & Friday 30<sup>th</sup> May**

Please note that the A419/A417 will be fully operational as usual outside of the specified hours. Diversion routes will be signed, and signage will also be in place before the start of works as a reminder.


### **Property access**

Should access to your property be required, traffic management personnel will make every effort to facilitate this. However, some delay may occur while safety measures are implemented to allow safe passage through the work site. A contact number will be provided at the closure entrance for assistance.

### **Noise disruption**

Due to the nature of the work we are carrying out there will be times when the work will cause some noise disruption. Every effort will be made to keep the noise to a minimum and we will plan the work to take place at times which will cause least disruption, but please note that this will not always be possible.

### **Diversion routes**

The proposed diversion routes for the closure are outlined below. Please refrain from following satellite navigation systems and instead adhere to the signed diversion routes, which correspond to the diversion maps enclosed with this letter and are clearly marked with diversion symbols at the start of the diversion route (e.g. for Diversion Route 6 Northbound, follow ).

**Diversion Route 6 Northbound – A419 Closure between Spine Road Junction and Burford Road Interchange – Thursday 22<sup>nd</sup> May & Friday 23<sup>rd</sup> May**

From the A419 Northbound Carriageway take the Spine Road Junction exit slip road and then take the 2<sup>nd</sup> exit at the roundabout signed Cirencester, Stroud A419.

At 2<sup>nd</sup> roundabout take the 1<sup>st</sup> exit continuing on the A419 Northbound.

At 3<sup>rd</sup> roundabout take the 2<sup>nd</sup> exit signed Cirencester A419.

At 4<sup>th</sup> roundabout take the 3<sup>rd</sup> exit Cirencester A419, Cheltenham (A435), Motorway (M5), Gloucester (A417), Stow (A429).

At 5<sup>th</sup> roundabout take the 3<sup>rd</sup> exit signed Stow A429, Burford (B4425), Lechlade (A417).

At 6<sup>th</sup> roundabout take the 1<sup>st</sup> exit signed (M5), Gloucester A417 onto entry slip road to A417 Northbound Carriageway.

**Diversion Route 7 Northbound – A419 Closure between Cricklade Junction and Spine Road Junction – Tuesday 20<sup>th</sup> May & Wednesday 21<sup>st</sup> May**

From the Cricklade Northbound exit slip road take the 2<sup>nd</sup> exit at the Cricklade roundabout signed Cricklade B4040.

At 1<sup>st</sup> roundabout take 1<sup>st</sup> exit signed Malmesbury B4040.

At 2<sup>nd</sup> roundabout take 1<sup>st</sup> exit onto the High Street signed Malmesbury B4040.

At 3<sup>rd</sup> roundabout take 2<sup>nd</sup> exit signed Malmesbury B4040.

At Common Hill Roundabout take 1<sup>st</sup> exit onto Malmesbury Road signed Malmesbury B4040.

At crossroad take turn right onto Ashton Road signed Ashton Keynes B4696.

At crossroad take turn right onto Spine Road East signed Swindon B4696.

At South Cerney roundabout take 4<sup>th</sup> exit signed Swindon A419.

**Diversion Route 7 Southbound – A419 Closure between Spine Road Junction and Cricklade Junction – Tuesday 27<sup>th</sup> May & Wednesday 28<sup>th</sup> May**

From the South Cerney Southbound exit slip road take the 4<sup>th</sup> exit at the 1<sup>st</sup> South Cerney roundabout signed Ashton Keynes B4696.

At 2<sup>nd</sup> South Cerney roundabout take 2<sup>nd</sup> exit onto the Spine Road East signed Ashton Keynes B4696.

At the T-junction turn left on to Ashton Road signed Wootton Bassett B4696.

At the junction turn right signed Wootton Bassett B4696.

At the crossroads turn left onto Malmesbury Road signed Leigh B4040.

At Common Hill roundabout take the second exit signed Town centre.

At 1<sup>st</sup> roundabout take 1<sup>st</sup> exit onto the High Street signed Cirencester A419.

At 2<sup>nd</sup> roundabout take 2<sup>nd</sup> exit signed Cirencester A419.

At 3<sup>rd</sup> roundabout take 2<sup>nd</sup> exit signed through traffic.

At Cricklade roundabout take 2<sup>nd</sup> exit onto Swindon Road signed Swindon A419.

**Diversion Route 10 Northbound – A419 Closure between M4 Junction 15 and Commonhead Junction – Wednesday 14<sup>th</sup> May & Thursday 15<sup>th</sup> May**

From the A436 Northbound take 1<sup>st</sup> exit at M4 J15 roundabout onto M4 signed Bristol M4.

At M4 J16 exit slip roundabout take 4<sup>th</sup> exit onto Great Western Way signed Swindon A3102

At Blagrove roundabout take 2<sup>nd</sup> exit on to Great Western Way signed Town Centre A3102.

At Mannington roundabout take 2<sup>nd</sup> exit onto Great Western Way signed Great Western.

At The Meadows roundabout take 2<sup>nd</sup> exit onto Great Western Way signed Barnfield B4006.

At Barnfield roundabout take 2<sup>nd</sup> exit onto Great Western Way signed Great Western.

At Bruce Street Bridges 1<sup>st</sup> roundabout take 1<sup>st</sup> exit signed Cheney Manor.

At Bruce Street Bridges 2<sup>nd</sup> roundabout take 2<sup>nd</sup> exit signed North Star B4289.

At Bruce Street Bridges 3<sup>rd</sup> roundabout take 1<sup>st</sup> exit onto Great Western Way signed Stratton B4289.

At North Star roundabout take 2<sup>nd</sup> exit onto Great Western Way signed Gorse Hill.

At Cockleberry 1<sup>st</sup> roundabout take 2<sup>nd</sup> exit signed Swindon Centre (M4 East).

At Cockleberry 2<sup>nd</sup> roundabout take 2<sup>nd</sup> exit onto Great Western Way signed Swindon Centre (M4 East).

At Transfer Bridges 1<sup>st</sup> roundabout take 3<sup>rd</sup> exit signed A4289.

At Transfer Bridges 2<sup>nd</sup> roundabout take 2<sup>nd</sup> exit onto Ocotal Way signed Swindon Centre.

At Colbourne roundabout take 1<sup>st</sup> exit onto Ocotal Way signed Through Traffic.

At Wills roundabout take 2<sup>nd</sup> exit onto Ocotal Way signed Oxford A420.

At junction turn right onto Drakes Way signed Motorway M4.

At Drakes roundabout take 1<sup>st</sup> exit onto Queens Drive signed Walcot E A4259.

At Coate roundabout take 3<sup>rd</sup> exit onto Marlborough Road signed Marlborough A4259.

At Commonhead roundabout take 1<sup>st</sup> exit signed A419.

**Diversion Route 10 Southbound – A419 Closure between Commonhead Junction and M4 Junction 15 – Wednesday 14<sup>th</sup> May & Thursday 15<sup>th</sup> May**

From the Commonhead Southbound exit slip take the 4<sup>th</sup> exit at the Commonhead roundabout onto Marlborough Road signed Swindon A4259.

At Coate roundabout take 3<sup>rd</sup> exit onto Queens Drive signed town centre A4259.

At Drakes roundabout take 2<sup>nd</sup> exit onto Drakes Way signed Burford (A361).

At junction turn left onto Ocotal Way signed Gorse Hill A4313.

At Wills roundabout take 2<sup>nd</sup> exit onto Ocotal way signed Cirencester (A419).

At Colbourne Roundabout take 3<sup>rd</sup> exit signed Gorse Hill.

At transfer bridges 1<sup>st</sup> roundabout take 3<sup>rd</sup> exit signed Gorse Hill (A419).



At transfer bridges 2<sup>nd</sup> roundabout take 1<sup>st</sup> exit onto Great Western Way signed North Star.  
At Cocklebury 1<sup>st</sup> roundabout take 2<sup>nd</sup> exit signed West Swindon B4289.  
At Cocklebury 2<sup>nd</sup> roundabout take 2<sup>nd</sup> exit onto Great Western Way signed Oasis.  
At North Star roundabout take 2<sup>nd</sup> exit onto Great Western Way signed Great Western (M4 West).  
At the Bruce Street Bridges 3<sup>rd</sup> roundabout take 2<sup>nd</sup> exit onto Great Western Way signed West Swindon B4006.  
At Barnfield roundabout take 2<sup>nd</sup> exit onto Great Western Way signed Toothill (M4).  
At The Meads roundabout take 2<sup>nd</sup> exit onto Great Western Way signed Town Centre B4006.  
At Mannington roundabout take 2<sup>nd</sup> exit onto Great Western Way signed Wootton Bassett A3102.  
At Blagrove roundabout take 2<sup>nd</sup> exit onto Great Western Way signed Wootton Bassett A3102.  
At Spittleborough M4 Junction 16 roundabout take 1<sup>st</sup> exit onto the M4 signed London M4.

**Diversion Route 11 Northbound – A419 Closure between Commonhead Junction and A420 White Hart Roundabout Junction – Monday 12<sup>th</sup> May & Tuesday 13<sup>th</sup> May**

From the Commonhead northbound exit slip take the 1<sup>st</sup> exit at the Commonhead roundabout signed Swindon A4259.  
At Coate Roundabout take 3<sup>rd</sup> exit onto Queens Drive signed town centre A4259.  
At Drakes roundabout take 2<sup>nd</sup> exit onto Drakes Way Signed Burford (A361).  
At Greenbridge roundabout take 3<sup>rd</sup> exit onto Slade Drive signed Oxford (A420).  
At White Hart roundabout 5<sup>th</sup> exit signed Cirencester (A419N).  
At island 1<sup>st</sup> exit onto slip signed Cirencester A419.

**Diversion Route 11 Southbound – A419 Closure between A420 White Hart Roundabout Junction and Commonhead Junction – Thursday 8<sup>th</sup> May & Friday 9<sup>th</sup> May**

From the White Hart Southbound Exit Slip roundabout take the 4<sup>th</sup> exit onto Oxford Road signed Town Centre A4312.  
At Greenbridge roundabout take the 2<sup>nd</sup> exit onto Drakes Way signed Town Centre A4312.  
At Drakes roundabout take 1<sup>st</sup> exit onto Queens Drive signed Walcot E A4259.  
At Coate roundabout take 3<sup>rd</sup> exit onto Marlborough Road signed Marlborough A4259.  
At Commonhead roundabout take 4<sup>th</sup> exit signed Motorway M4.

**Diversion Route 12 Northbound – A419 Closure between A420 White Hart Roundabout Junction and Turnpike Junction – Tuesday 6<sup>th</sup> May & Wednesday 7<sup>th</sup> May**

From the A419, exit at the A420 Northbound Exit Slip and then take the 2<sup>nd</sup> exit at the first

roundabout signed A4312.

At White Hart roundabout take the 1<sup>st</sup> exit on to the Oxford Road signed Swindon, Dorcan and Stratton.

At Lady Margaret Traffic Lights continue forward signed A4312 Town Centre.

At Greenbridge roundabout take the 4<sup>th</sup> exit signed Highworth (A361), Cirencester (A419).

At the New Inn roundabout take the 1<sup>st</sup> exit onto Bridge End Road signed Elgin B4143.

At Gypsy Lane roundabout take 2<sup>nd</sup> exit onto Gypsy Lane signed Elgin B4143.

At next roundabout take 2<sup>nd</sup> exit onto Gypsy Lane signed Gorsehill.

At Chapel roundabout take 3<sup>rd</sup> exit signed Cirencester A4311 (A419).

At Elgin Drive roundabout take 1<sup>st</sup> exit signed Cirencester A4311 (A419).

At Kembrey Park roundabout take 2<sup>nd</sup> exit signed Cirencester (A419).

At Headlands roundabout take 1<sup>st</sup> exit signed Cirencester A4311 (A419).

At Moonrakers roundabouts take 2<sup>nd</sup> then 1<sup>st</sup> exits onto Cricklade Road signed Cirencester A4311 (A419), through next set of traffic Lights then follow on to Arkwright Junction.

At Arkwright Traffic Lights, follow straight on signed (A419) Cirencester.

At the next set of Traffic Lights, merge to the right and follow signs for (A419) Cirencester.

Then at next set of Traffic Lights, stay in right hand lane and Re-Join (A419) Cirencester.

**Diversion Route 12 Southbound – A419 Closure between Lady Lane Junction and A420 White Hart Roundabout Junction – Thursday 1<sup>st</sup> May & Friday 2<sup>nd</sup> May**

From the Lady Lane Southbound Exit Slip turn right at 1<sup>st</sup> set of traffic lights signed Swindon A4311.

At 2<sup>nd</sup> set of traffic lights turn left and follow road signed Swindon N & W, A4311.

At 3<sup>rd</sup> set of traffic lights carry straight on through, taking 1<sup>st</sup> exit left following Town Centre.

At 4<sup>th</sup> set of traffic lights carry straight on still following Town Centre.

At Moonrakers roundabouts take 2<sup>nd</sup> then 1<sup>st</sup> exit signed Town Centre A4311.

At Headlands roundabout take 2<sup>nd</sup> exit signed Town Centre.

At Kembrey Park roundabout take 2<sup>nd</sup> exit signed Gorse Hill A4311.

At Elgin Drive roundabout take 2<sup>nd</sup> exit Town Centre (M4).

At Chapel roundabout take 1<sup>st</sup> exit onto Gypsy Lane signed Burford (A361).

At Murdoch roundabout take 2<sup>nd</sup> exit signed BMW Group.

At Gypsy Lane roundabout take 1<sup>st</sup> exit onto Bridge End Road signed BMW Group.

At New Inn roundabout take the 2<sup>nd</sup> exit signed Oxford (A420), Motorway (M4).

At Greenbridge roundabout take the 1<sup>st</sup> exit on to Slade Drive signed Oxford (A420), (M4).

At Lady Margaret traffic lights carry straight on.

At White Hart roundabout take the 4<sup>th</sup> exit signed (M4), A419 (S) to rejoin the A419 Southbound Carriageway.

**Diversion Route 14 Northbound – A419 Closure between Turnpike Junction and Spine**

**Road Junction – Friday 16<sup>th</sup> May & Monday 19<sup>th</sup> May**

From the Turnpike Northbound Exit Slip merge to the left, signed Swindon N&W A4311.

At 1<sup>st</sup> set of Traffic Lights continue onto Cricklade Road A4311, stay right.

At 2<sup>nd</sup> set of Traffic Lights continue straight onto Thamesdown Drive A4311, signed West Swindon.

At 3<sup>rd</sup> set of Traffic Lights continue straight on.

At 4<sup>th</sup> set of Traffic Lights continue straight on.

At 5<sup>th</sup> set of Traffic Lights continue straight on.

At 6<sup>th</sup> set of Traffic Lights continue straight on.

At 7<sup>th</sup> set of Traffic Lights continue straight on.

At 8<sup>th</sup> set of Traffic Lights continue straight on.

At 9<sup>th</sup> set of Traffic Lights continue straight on.

At 10<sup>th</sup> set of Traffic Lights continue straight on.

At Sparcells roundabout, take 2<sup>nd</sup> exit, signed M4, Hillmead, B4534.

At next roundabout take 2<sup>nd</sup> exit, signed M4, Hillmead, B4534.

At next roundabout take 1<sup>st</sup> exit, signed M4, Hillmead, B4534.

At next roundabout take 2<sup>nd</sup> exit signed M4, Shaw, B4534.

At next roundabout take 2<sup>nd</sup> exit to continue on B4534.

At next roundabout take 2<sup>nd</sup> exit signed M4, Town Centre, Westmead, Westlea, B4006.

At next roundabout take 3<sup>rd</sup> exit signed M4, Town Centre, Toothill, B4006.

At next roundabout take 2<sup>nd</sup> exit signed M4, Royal W. Bassett, Windmill, Blagrove, A3102.

At next roundabout take 2<sup>nd</sup> exit signed M4, Royal W. Bassett, A3102.

At next roundabout take 2<sup>nd</sup> exit signed M4 West.

At next roundabout take 2<sup>nd</sup> exit to continue on A3102.

At next roundabout take 2<sup>nd</sup> exit signed Malmesbury, Brinkworth, Cricklade, Ashton Keynes B4042.

Continue to Royal Wootton Bassett using the B4042 and travel to Ashton Keynes using the B4696.

Continue along B4696 onto entry slip road to A419 Northbound Carriageway.

**Diversion Route 14 Southbound – A419 Closure between A419 Closure between Spine**

**Road Junction and Lady Lane Junction – Thursday 29<sup>th</sup> May & Friday 30<sup>th</sup> May**

From the A419 Southbound Carriageway take the Spine Road Junction exit slip road.

At 1<sup>st</sup> roundabout take 4<sup>th</sup> exit to travel along the B4696 Spine Road.

At the 2<sup>nd</sup> roundabout take the 2<sup>nd</sup> exit to continue travelling along the B4696 Spine Road East to Aston Keynes.

Continue to Royal Wootton Bassett using the B4042.

At 3<sup>rd</sup> roundabout take 2<sup>nd</sup> exit signed M4, Swindon, Interface, Woodshaw, A3102.

At 4<sup>th</sup> roundabout take 1<sup>st</sup> exit signed M4, Swindon, A3102.

At 5<sup>th</sup> roundabout take 2<sup>nd</sup> exit signed Swindon, A3102.

At 6<sup>th</sup> roundabout take 2<sup>nd</sup> exit signed Town Centre, A3102.

At 7<sup>th</sup> roundabout take 2<sup>nd</sup> exit signed Great Western, North Star, Stratton, B4006.

At 8<sup>th</sup> roundabout take 1<sup>st</sup> exit to continue on B4006.

At 9<sup>th</sup> roundabout take 2<sup>nd</sup> exit signed Cirencester A419, Shaw, Hillmead.

At 10<sup>th</sup> roundabout take 2<sup>nd</sup> exit signed Cirencester A419, Hillmead, B4534.

At 11<sup>th</sup> roundabout take 2<sup>nd</sup> exit signed Cirencester A419, Sparcells, B4534.

At 12<sup>th</sup> roundabout take 2<sup>nd</sup> exit to continue on B4534.

At 13<sup>th</sup> roundabout take 2<sup>nd</sup> exit signed Cirencester A419, North Swindon, B4534.

At 14<sup>th</sup> roundabout take 2<sup>nd</sup> exit signed Cirencester A419, North Swindon, Blunsdon, B4534.

Continue along B4534 onto entry slip road to A419 Southbound Carriageway.

#### **Contact**

Fatima Alawad (Stakeholder Support Manager)

**Email:** Fatima.Alawad@wsp.com

Yours sincerely,

A handwritten signature in black ink, appearing to read 'Mike Jackson', is centered on a light yellow rectangular background.

Mike Jackson  
**Road Manager**

Enc.

Diversion Route Maps

## ROUTE 6

A417 Northbound Closed  
Between  
Spine Road Junction  
And  
Burford Road Interchange



# CLOSED BETWEEN BURFORD ROAD INTERCHANGE AND SOUTH CERNLEY JUNCTION

## A419/A417 NORTHBOUND

Diversion Route  
Symbol



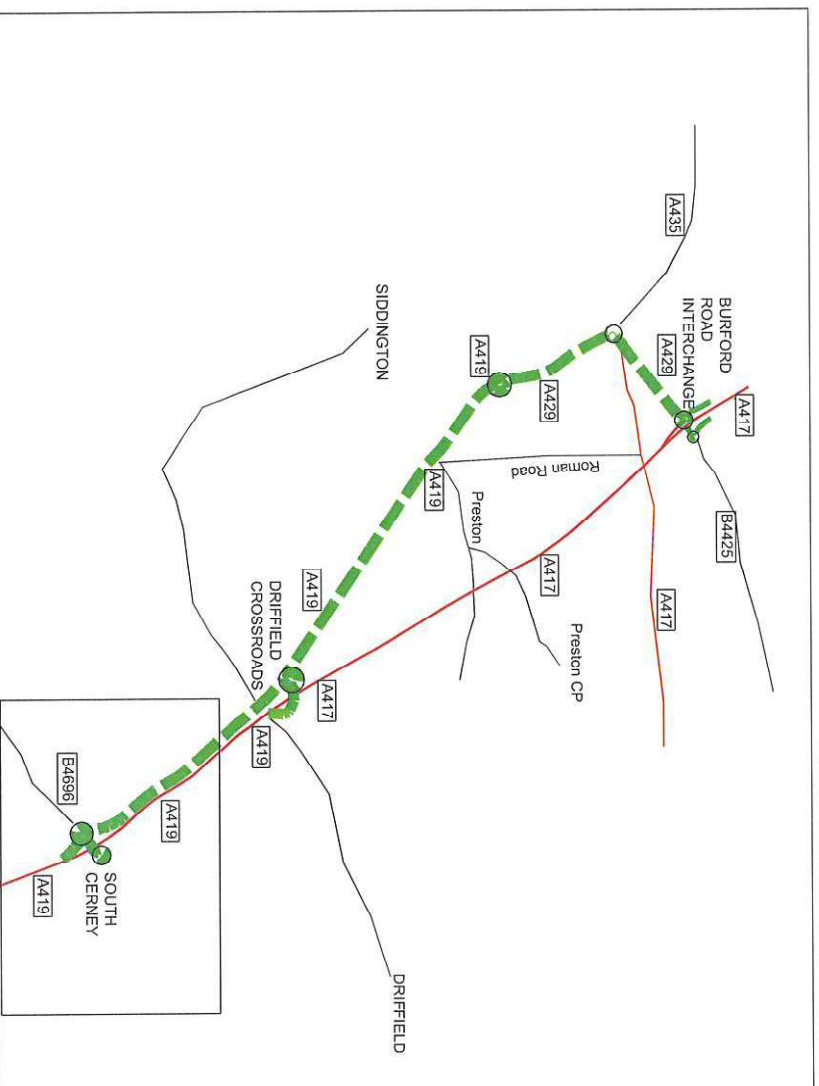
### Action Points

Step 1: Close A419/A417 Northbound carriageway at Cernley junction.  
Step 2: Open trigger signs at South Cernley junction Exit Slip Road.  
Reverse procedure at end of closure.

A417 Northbound Carriageway at South Cernley.

Northbound Exit Slip Road.

Standard Road Closure to TMC requirements



This route was agreed as the preferred option by the following parties during 2007:  
Highways Agency, R.M.S., Gloucestershire Police and Gloucester County Council

**HA HIGHWAYS**  
AGENCY

**mouchel**

Diversion Route 6 (Northbound)  
Oct 2008

## **ROUTE 7**

**A419 Northbound Closed**

**Between**

**Cricklade Junction**

**And**

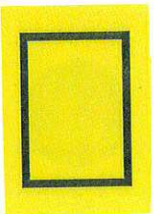
**Spine Road Junction**





# A419 NORTHBOUND CLOSED BETWEEN CRICKLADE JUNCTION AND SOUTH CERNEY JUNCTION

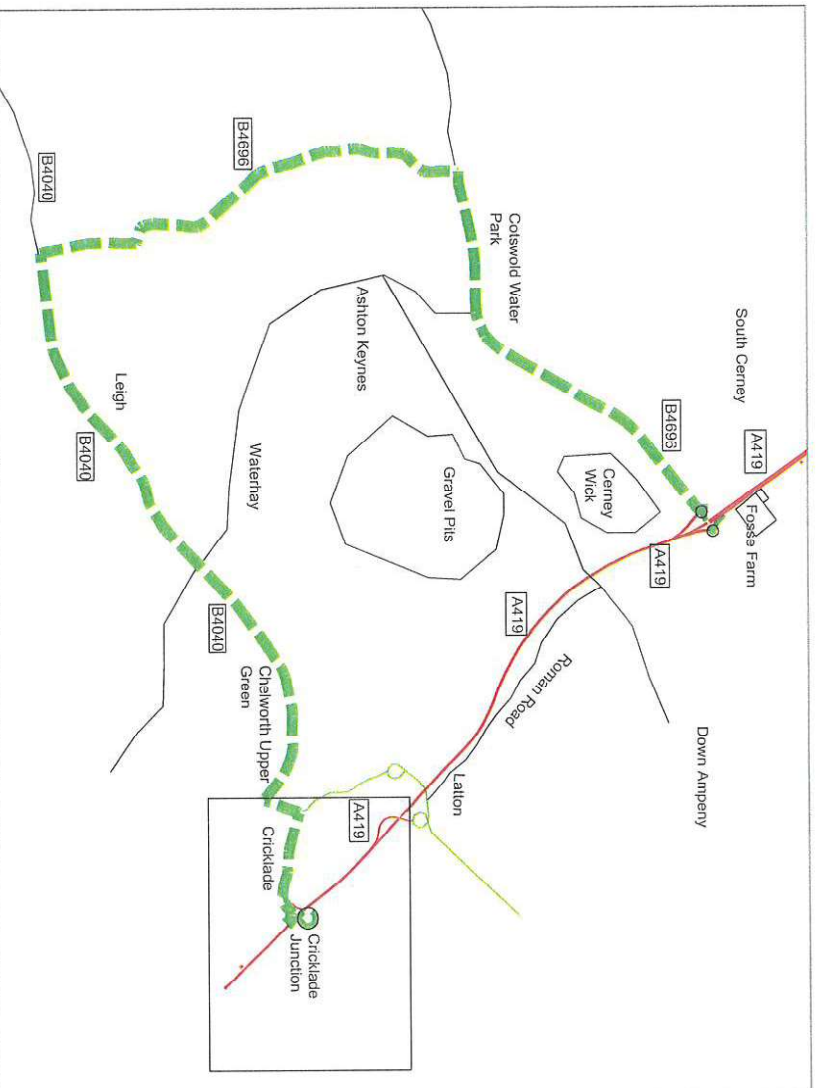
Diversion Route  
Symbol



**Action Points**  
 Step 1: Close A419 Northbound carriageway at Cricklade Junction with A4040  
 Step 2: Open trigger signs at Cricklade Northbound Exit Slip Road.  
 Reverse procedure at end of closure.

A419 Northbound Main Carriageway at Cricklade Northbound Exit Slip Road.

Standard Road Closure to TMC requirements



This route was agreed as the preferred option by the following parties during 2007:  
 Highways Agency, R.M.S. Gloucestershire Police and Gloucester County Council

**HA HIGHWAYS**  
 AGENCY

**mouchel**

Diversion Route 7 (Northbound)  
 Oct 2008

A



## **ROUTE 7**

**A419 Southbound Closed  
Between  
Spine Road Junction  
And  
Cricklade Junction**



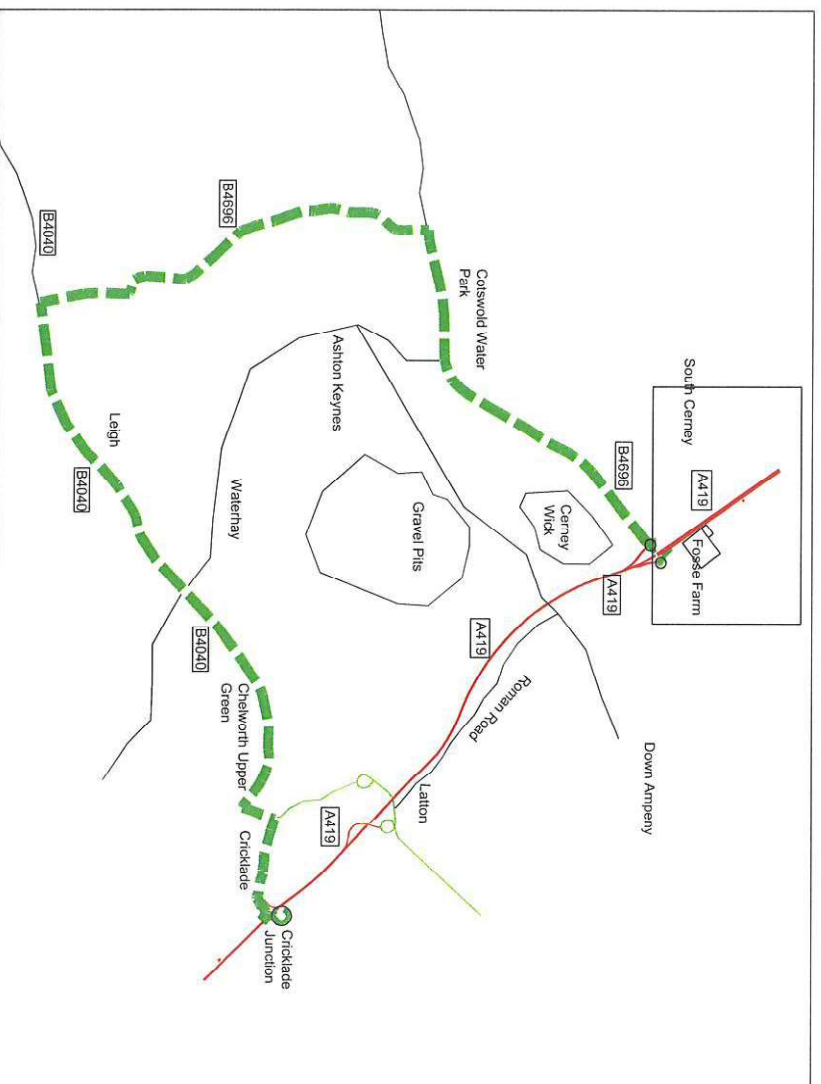
# A419 SOUTHBOUND CLOSED BETWEEN SOUTH CERNEY JUNCTION AND CRICKLADE JUNCTION

Diversion Route  
Symbol



**Action Points**  
 Step 1: Close A419 Southbound carriageway at Cerney Junction with B4696.  
 Step 2: Open trigger signs at South Cerney Southbound Exit Slip Road.  
 Reverse procedure at end of closure.

A419 Southbound carriageway at Cerney Junction with B4696.  
 Standard Road Closure to TMC requirements



This route was agreed as the preferred option by the following parties during 2007:  
 Highways Agency, R.M.S. Gloucestershire Police and Gloucester County Council

**HA HIGHWAYS**  
 AGENCY

**mouchel**

Diversion Route 7 (Southbound)  
 Oct 2008

## ROUTE 10

A419 Northbound Closed  
Between  
M4 Junction 15 Roundabout  
And  
Commonhead Roundabout





## **Diversion Route 10 - Northbound**

**Key:**  
 Diversion Route ██████████

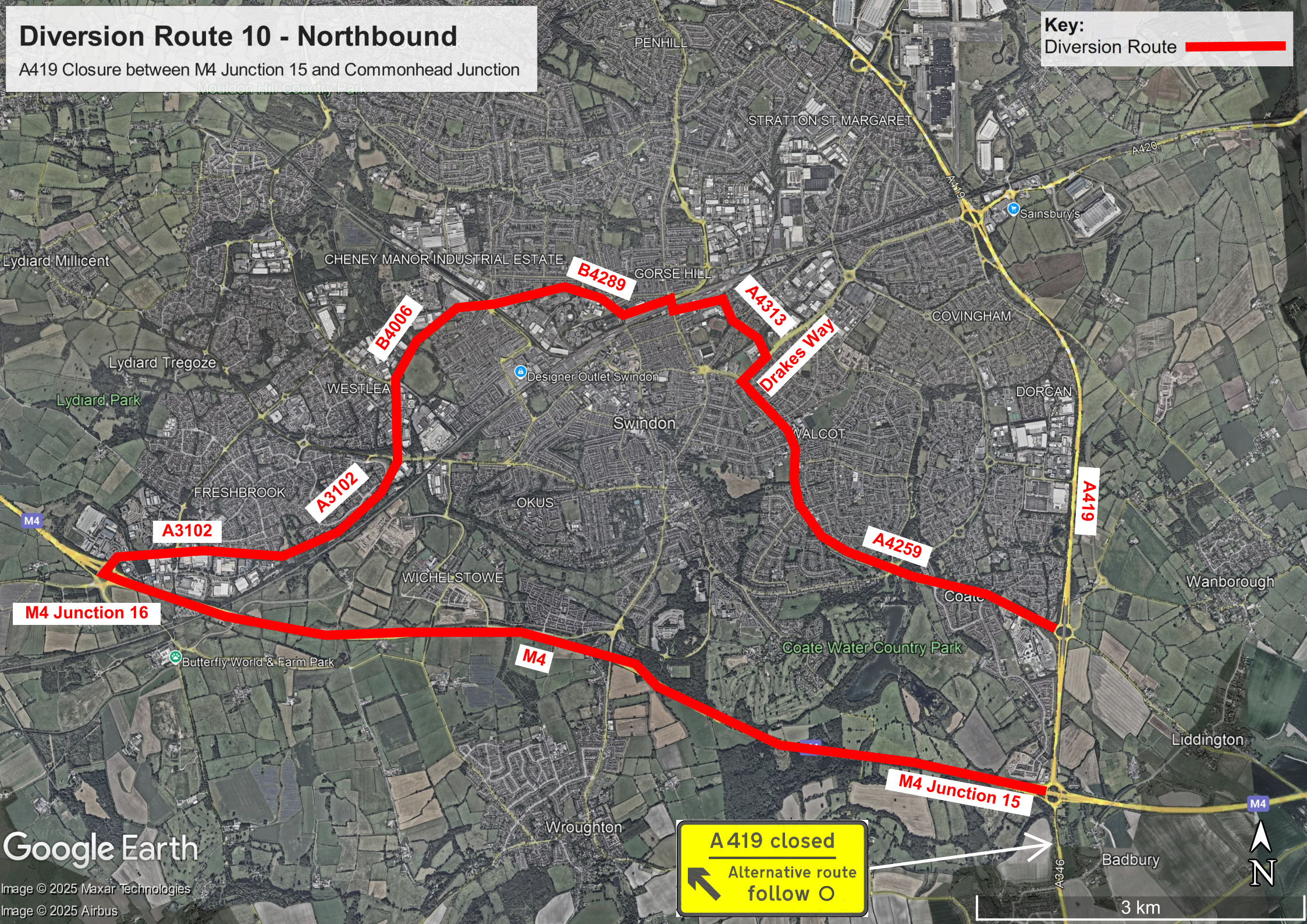



Image © 2025 Maxar Technologies  
Image © 2025 Airbus

**A419 closed**  
Alternative route  
follow **O**

 Alternative route  
follow 



3 km





ROUTE 10

A419 Southbound Closed

At

Commonhead Junction

And

M4 Junction 15



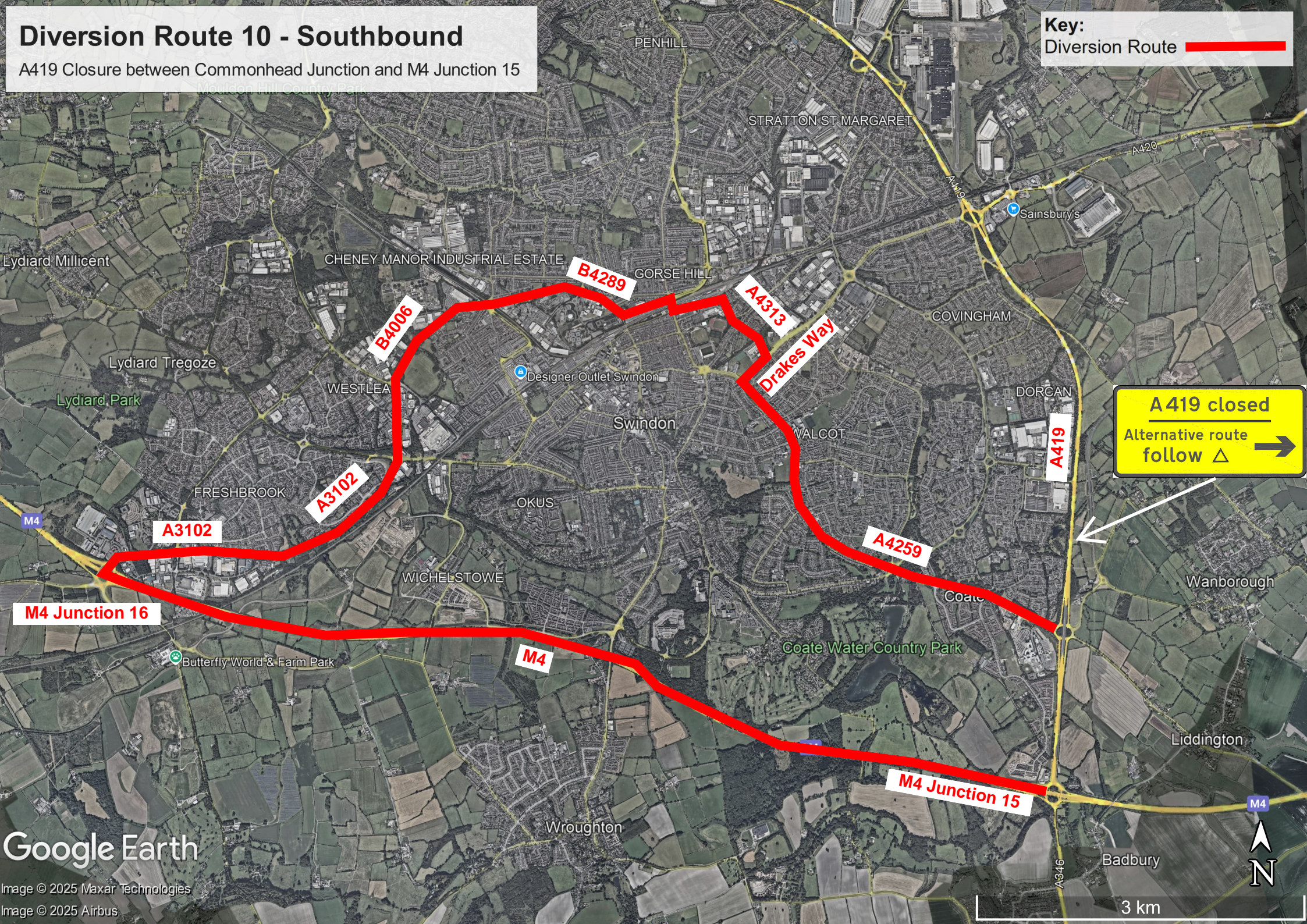


# Diversion Route 10 - Southbound

A419 Closure between Commonhead Junction and M4 Junction 15

Key:

Diversion Route 



A 419 closed  
Alternative route  
follow Δ ➔

Google Earth

Image © 2025 Maxar Technologies  
Image © 2025 Airbus



## **ROUTE 11**

**A419 Northbound Closed  
Between  
Commonhead Roundabout  
And  
White Hart Roundabout**

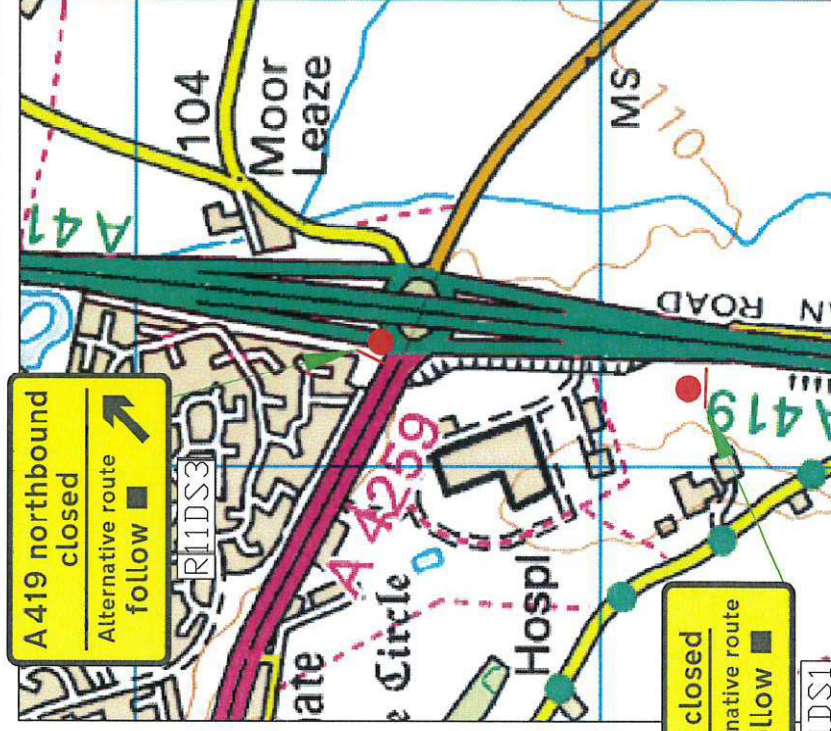


CLOSED BETWEEN COMMONHEAD ROUNDABOUT AND WHITE HART ROUNDABOUT.



Step 1: Close A419 at Northbound carriageway at Commonhead roundabout junction with A4259.  
Step 2: Open trigger signs at Commonhead roundabout Northbound Exit Slip Road.  
Reverse procedure at end of closure.

## Standard Road Closure to TMC requirements





## **ROUTE 11**

**A419 Southbound Closed  
Between  
White Hart Roundabout  
And  
Commonhead Roundabout**



# A419 SOUTHBOUND



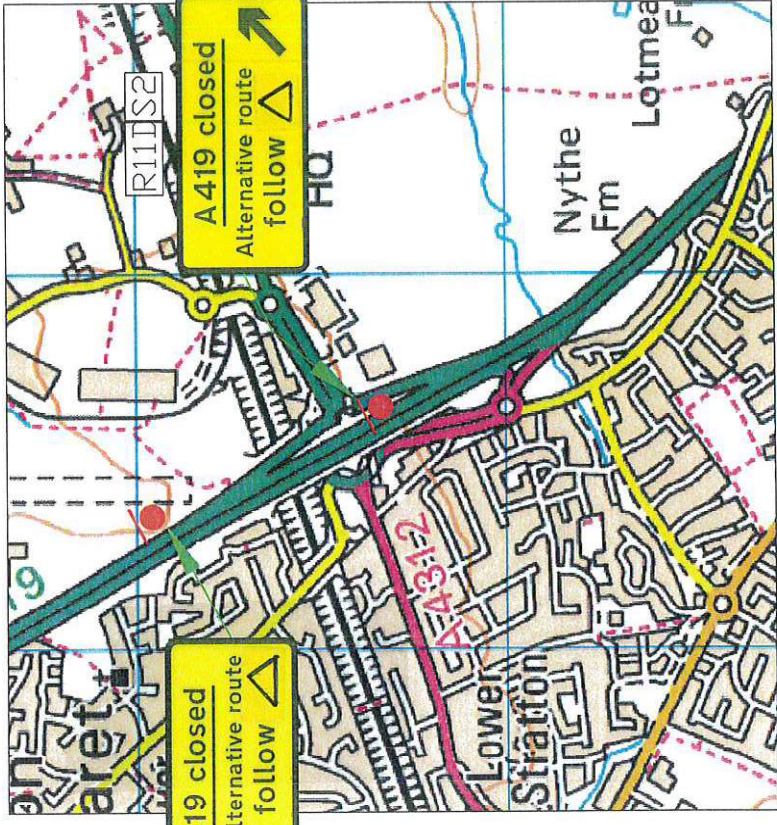
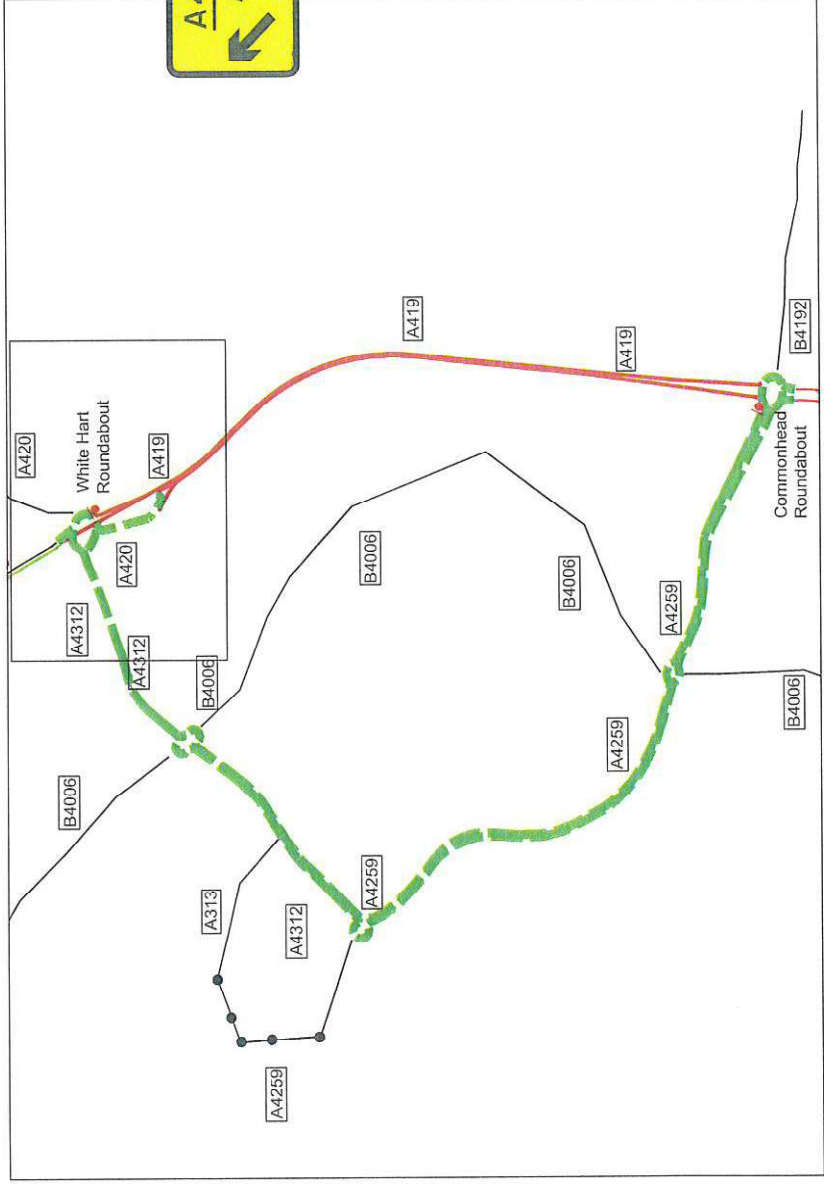
## Diversion Route Symbol

## Action Points

Step 1: Close A419 at Southbound carriageway at White Hart roundabout junction with A419/A4312.  
Step 2: Open trigger signs at White Hart roundabout Southbound Exit Slip Road .  
Reverse procedure at end of closure.

A419 Southbound Carriageway at White Hart Roundabout.

## Standard Road Closure to TMC requirements



## **ROUTE 12**

**A419 Northbound Closed  
Between  
A420 White Hart Roundabout  
And  
Turnpike Junction**



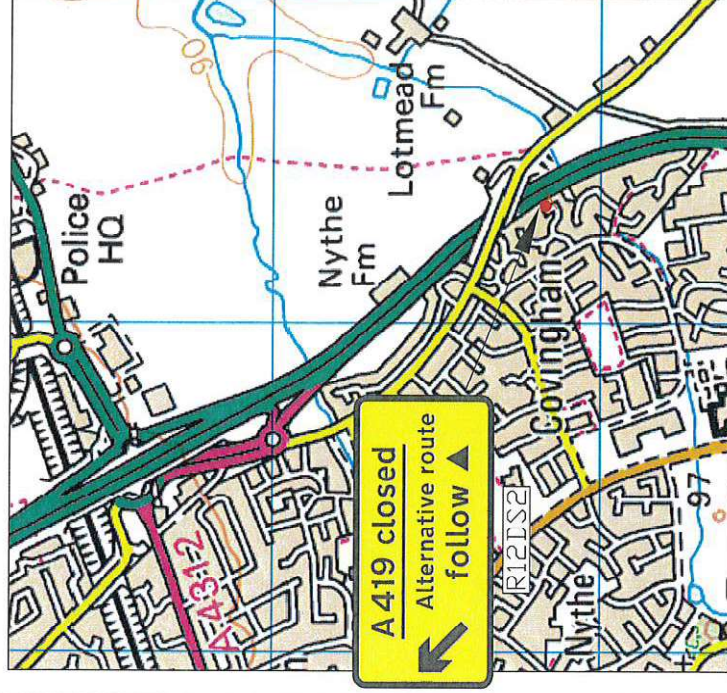


# CLOSED BETWEEN WHITE HART ROUNDABOUT AND TURNPIKE JUNCTION.



Step 1: Close A419 at Northbound carriageway at White Hart Roundabout Junction with A420.  
Step 2: Open trigger signs at White Hart Northbound Exit Slip Road .  
Reverse procedure at end of closure.

## Standard Road Closure to TMC requirements



**ROUTE 12**

**A419 Southbound Closed**

**Between**

**Lady Lane Junction**

**And**

**A420 White Hart Roundabout**



# A419 SOUTHBOUND

## CLOSED BETWEEN TURNPIKE JUNCTION AND WHITE HART ROUNDABOUT.



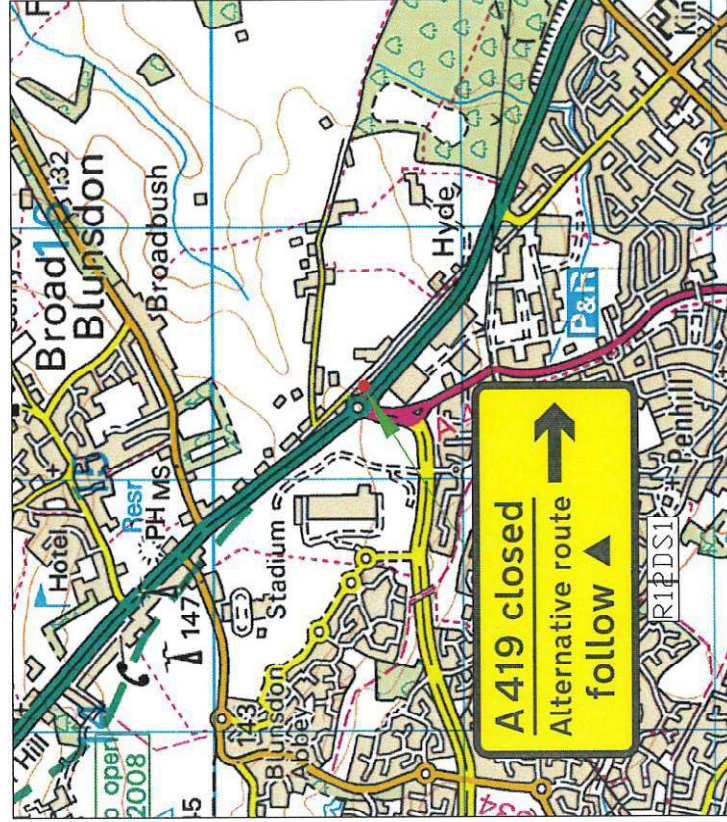
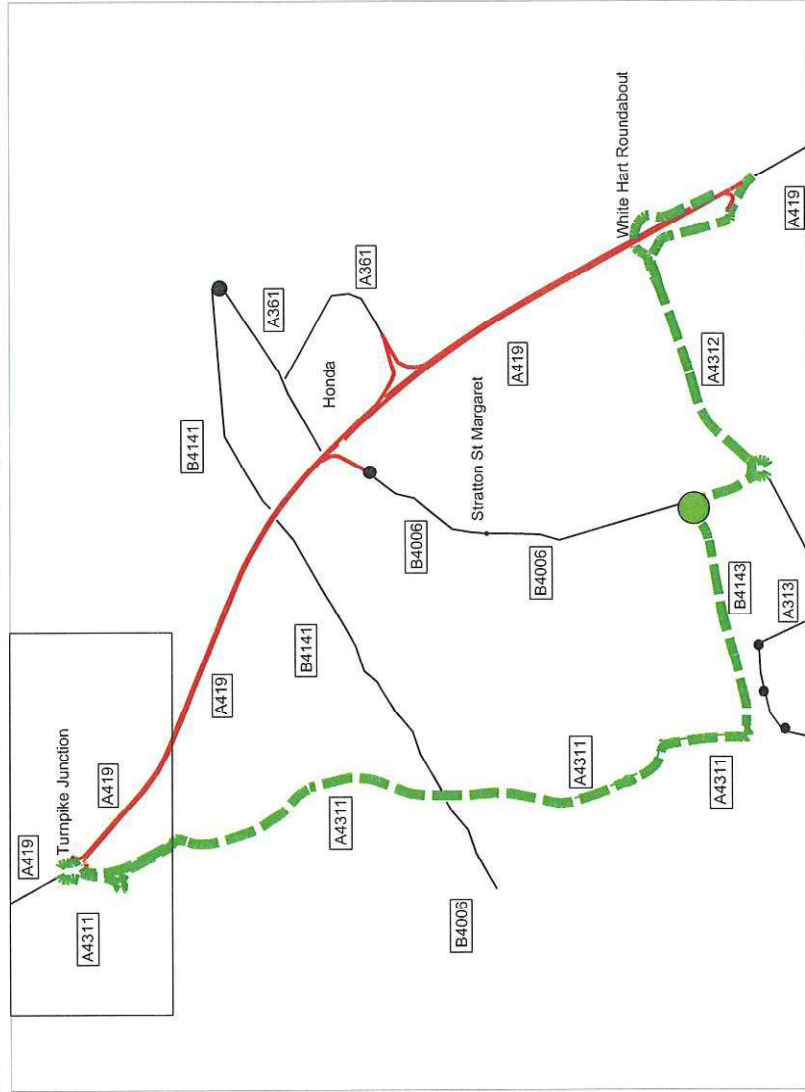
Diversion Route  
Symbol

### Action Points

- Step 1: Close A419 at Southbound carriageway at Turnpike Junction A4311.
- Step 2: Open trigger signs at Turnpike Junction Southbound Exit Slip Road.
- Reverse procedure at end of closure.

A419 Southbound Carriageway at Turnpike Junction.

Standard Road Closure to TMC requirements



This route was agreed as the preferred option by the following parties during 2007:

Highways Agency, R.M.S, Gloucestershire Police and Gloucester County Council



Diversion Route 12 (Southbound)

Oct 2008



## ROUTE 14

A419 Northbound Closed  
Between  
Turnpike Junction  
And  
Spine Road Junction



# A419 NORTHBOUND

## CLOSED BETWEEN TURNPIKE JUNCTION AND SPINE

### ROAD JUNCTION

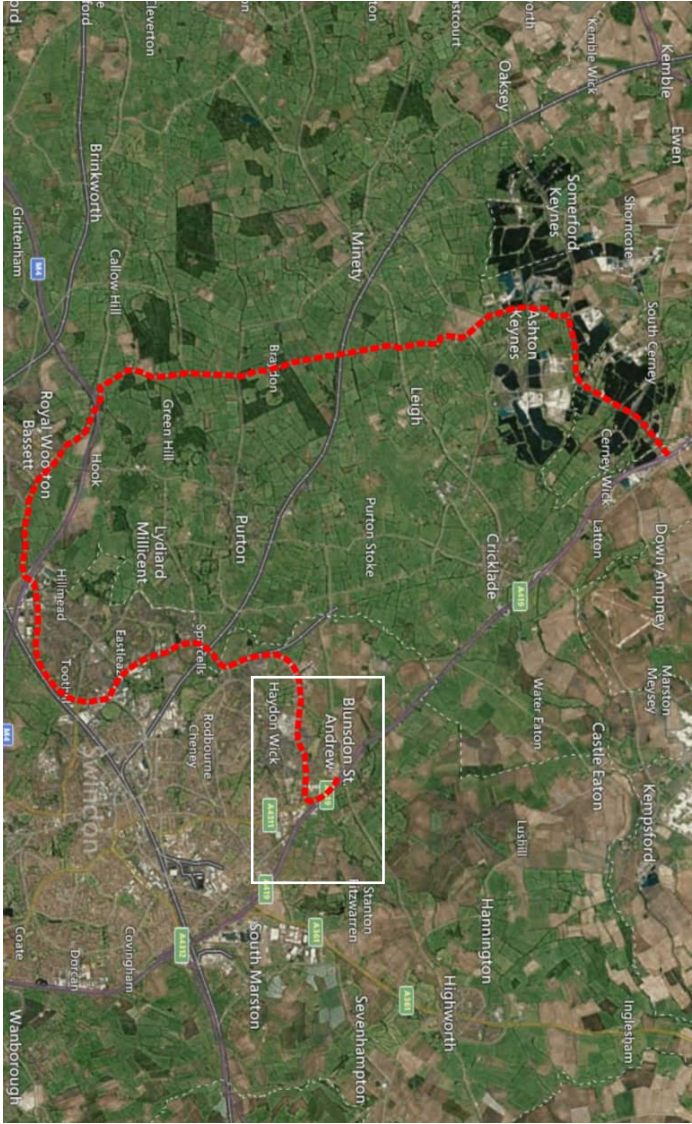
Diversion Route  
Symbol



Action Points

- Step 1: Close A419 Northbound carriageway at Turnpike Junction with A4311.
- Step 2: Open trigger signs at Turnpike Junction Northbound Exit Slip Road.
- Reverse procedure at end of closure.

Standard Road Closure to TMC requirements



This route was agreed as the preferred option by the following parties during 2007:  
Highways Agency, R.M.S. Gloucestershire Police and Gloucester County Council



Diversion Route 14 (Northbound)  
Aug 2024



## ROUTE 14

A419 Southbound Closed  
Between  
Spine Road Junction  
And  
Lady Lane Junction



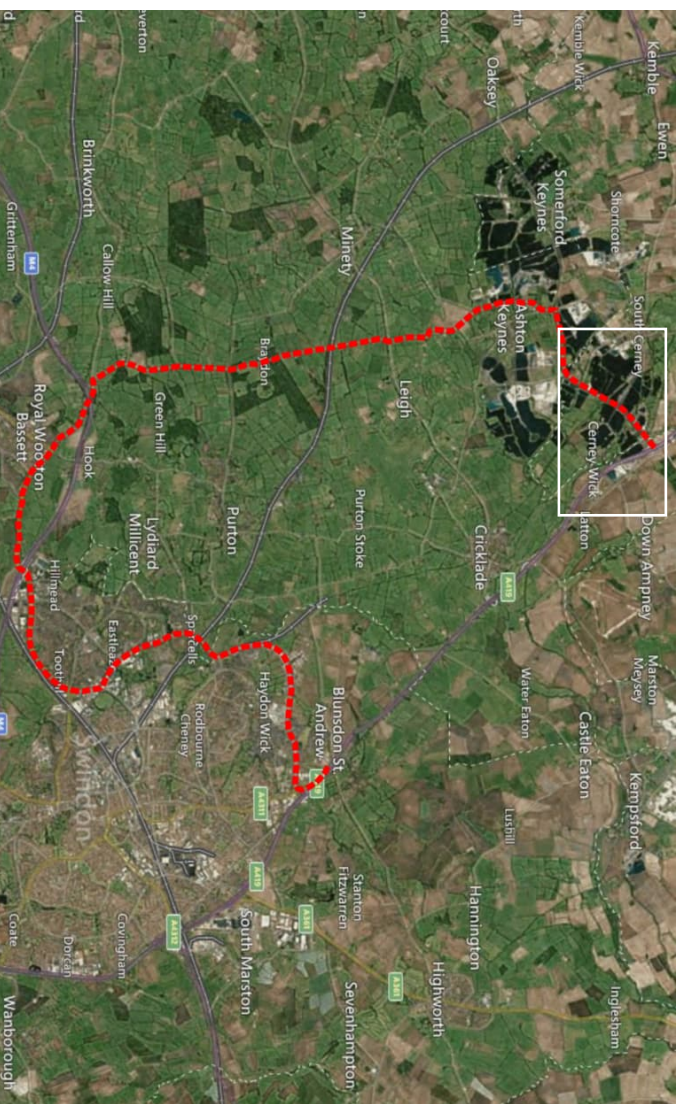
# A419 SOUTHBOUND CLOSED BETWEEN SPINE ROAD JUNCTION AND LADY LANE JUNCTION

Diversion Route  
Symbol



**Action Points**  
 Step 1: Close A419 Southbound carriageway at Cerney Junction with B4696.  
 Step 2: Open trigger signs at South Cerney Southbound Exit Slip Road.  
 Reverse procedure at end of closure.

A419 Southbound carriageway at Cerney Junction with B4696.  
 Standard Road Closure to TMC requirements



This route was agreed as the preferred option by the following parties during 2007:  
 Highways Agency, R.M.S. Gloucestershire Police and Gloucester County Council